

Bacteria Shapes

Most bacteria are one of three shapes (although there are a few other possibilities):

coccus (singular), cocci (plural):

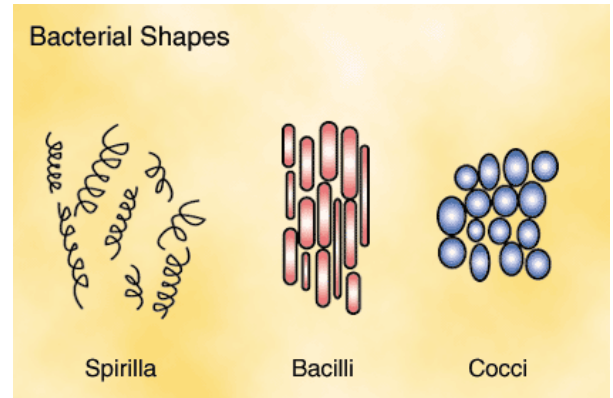
are spherical (coccus = a berry),

bacillus (singular.), bacilli (plural.):

are rod-shaped (bacill(um) = a little stick), and

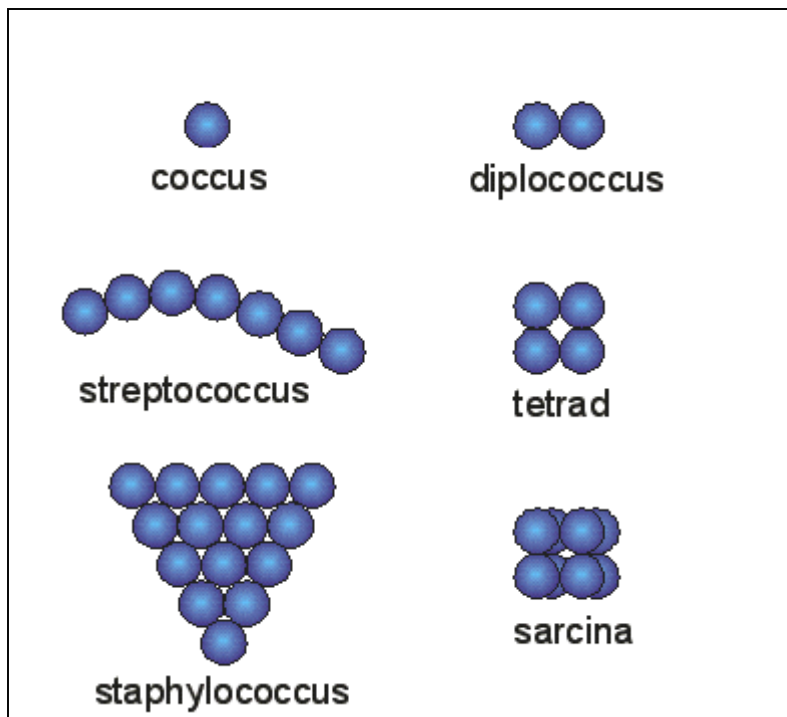
spirillum (singular), spirilla (plural):

are spiral (spiro = spiral, coil).



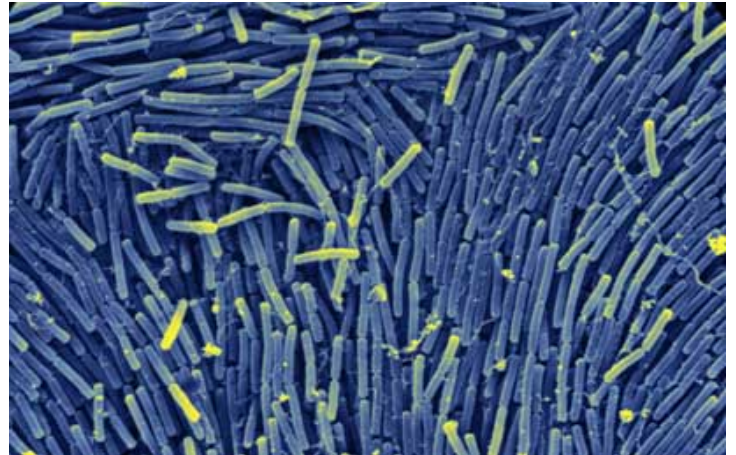
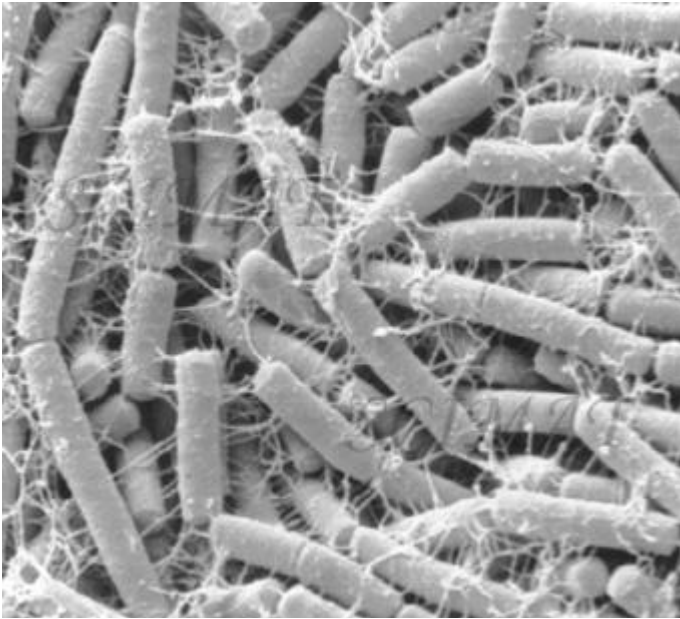
Coccus

A bacterium having a spherical shape. Some diseases that can be caused by coccus-type bacteria: staphylococci infections, food poisoning, urinary tract infections, toxic shock syndrome, meningitis, gonorrhea, throat infections, pneumonia, and sinusitis.



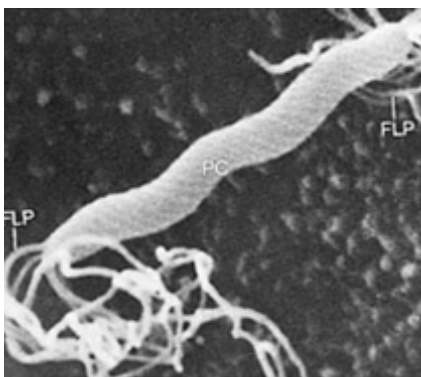
Bacillus

Bacteria that have a rod-like shape. Below is a picture of *Escherichia Coli* commonly found in our intestines. *Bacillus anthracis* is a bacterium of the genus Bacillus, which causes the disease known as anthrax.



Spirillum

Bacteria which have an elongated spiral form.



Diseases caused by spirochaetes include the following: Syphilis and Lyme disease.